



Year 5 Weekly Homework Week Beginning 15.11.21

If your child wishes to share their work with the class, they will be given the opportunity to do so at some point.

Rights Respecting Articles: Article 3 -The best interests of the child must be a top priority in all decisions and actions that affect children.

MATHS

Times Tables 1-12

<https://www.timestables.co.uk/>

DC

<https://www.topmarks.co.uk/maths-games/hit-the-button>

Maths Daily Lessons (Mon 15th - Fri 19th November)

Fractions and Decimals, Lessons 1-5

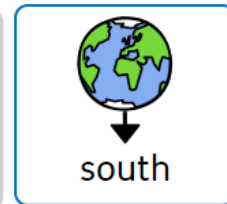
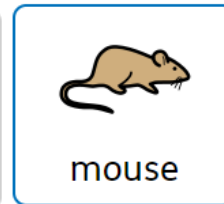
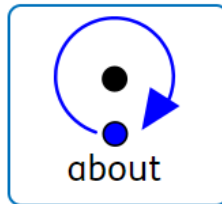
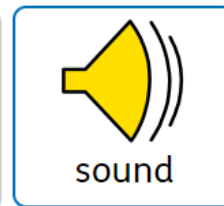
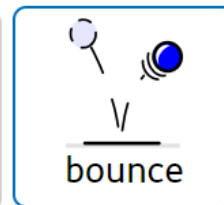
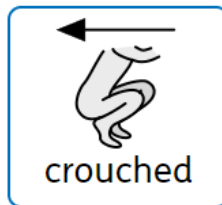
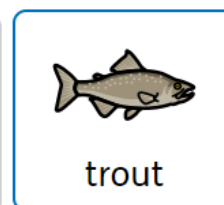
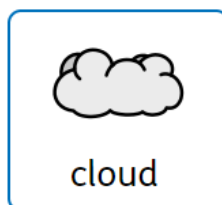
<https://classroom.thenational.academy/units/fractions-and-decimals-be3a>

LITERACY

Spelling - Prefixes (in, im, ir, il)

Spelling Rule: 'ou'

inactive
indecent
incapable
inconvenient
immature
impossible
impatient
impolite
irregular
irrational
irresponsible
irresistible
illegal
illiterate
illegible



Make sure you check the meaning of all new words in a dictionary.

Y5 Aut 2 Wk 3

SET spellings are on the right (Pattern: 'ou').

Literacy Daily Lessons Maths Daily Lessons (Mon 15th - Fri 19th November)

The Windrush, Diary Writing, Lessons 6-10

<https://classroom.thenational.academy/units/the-windrush-diary-writing-6b05>

Reading - select a book of your choice
<https://www.purplemash.com/sch/osmani>
<https://stories.audible.com/discovery>
(If possible, collect a reading book from school if you are shielding)

SCIENCE

What is an ecosystem?
<https://classroom.thenational.academy/lessons/what-is-an-ecosystem-cgtpcr>

Geography

Local Fieldwork, Lesson 10
<https://classroom.thenational.academy/lessons/what-do-geographers-do-with-their-data-c8wp8d>

History

What impact has Nelson Mandela had?
<https://classroom.thenational.academy/lessons/what-impact-has-nelson-mandela-had-chk38e>

RE

What is the Holy Trinity?
In this lesson you will be learning about the life, teachings and death of Jesus.
<https://classroom.thenational.academy/lessons/what-is-the-holy-trinity-cthk6c>

PSHE

King of the Road
Look at some common road signs and learn how to keep safe whilst out on a bike. You will become familiar with the car seat law and create a fact sheet on what you have learnt.
<https://classroom.thenational.academy/lessons/king-of-the-road-6mu36t>

PE- Daily workouts



[Yoga](#)



[P.E with Joe](#)