

Headteacher: Remi Atoyebi

Deputy Headteacher: Penny Seymour



Year 3 'Screen-Free' Half Term Project Homework

This homework has been set for the week beginning 15th February 2021 during the Spring Half Term Holidays.

If your child wishes to share their work with the class, they will be given the opportunity to do so at some point.

This project homework has been set to encourage children to be 'screen-free', so there are no research-based activities set for children in this project. For this project homework, please select one or more activities below and complete them. This homework project is for the whole family to get involved with and we would encourage children to get help completing any of the activities.

<p>Challenge your body to a bootcamp challenge. KS1 - complete 10 mins of Just Dance each day. Complete a Joe Wickes video each day or create your own exercise routine at home and draw pictures.</p> 	<p>Draw a poster showing how a festival is celebrated e.g. Easter, Chinese New Year, Eid, Passover etc.</p> 	<p>Write a song/diary entry or poem about the beginning of Corona/ first Lockdown/ first summer of Lockdown/returning to school after Lockdown etc.</p> 	<p>Write a recipe of your favourite food and cook/bake it with an adult or create your own recipe. Take photos and send it to the school office::</p> <p>admin@osmani.towerhamlets.sch.uk</p> 
<p>Create origami of different animals/plants/objects. Encourage your family to join in with the activity.</p> 	<p>Write a short story or a poem for the Creative Writing Competition: https://www.towerhamlets-sls.org.uk/cwc21/</p> 	<p>Play a board game with your family that involves Maths (e.g. has a dice) or create a Maths board game (e.g. your own version of snakes and ladders).</p> 	<p>Sketch your favourite item in nature (tree, clouds, flower etc) or build a structure using natural materials (wood, stone, leaves, etc.)</p> 

Osmani Primary School
Vallance Road, London, E1 5AD

Tel: 020 7247 8909 Fax: 020 7247 9906

Email: admin@osmani.towerhamlets.sch.uk



Headteacher: Remi Atoyebi

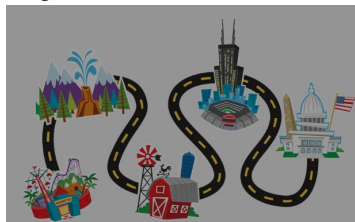
Deputy Headteacher: Penny Seymour



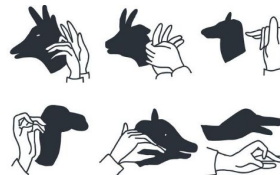
Create your own 'alphabet' using symbols of your choice. Write a secret message for a friend to decode or create a treasure hunt with a map.



Take a walk around your local neighbourhood and draw a route map of where you went or go cycling/scooting/jogging around your local neighbourhood.



Put on your own sock/finger/shadow puppet show or do some shadow drawing using light source and objects around the house.



Draw a map/timeline of how the virus spread across the world with pictures.



Free choice: Pick a project of your own to complete - remember they are based on 'screen-free' activities.

Osmani Primary School
Vallance Road, London, E1 5AD

Tel: 020 7247 8909 Fax: 020 7247 9906

Email: admin@osmani.towerhamlets.sch.uk

